

Thank you for
joining us for our

BOLDEST

year yet.

Martha's  **Table**
EDUCATION • FOOD • OPPORTUNITY
2017 Annual Report

From the President and CEO

Dear Friends,

Welcome to Martha's Table's boldest year yet!

As we press forward, we have several big moves in 2018—transitioning our headquarters to The Commons—East of the River, opening a new early childhood education center in Columbia Heights, expanding our Joyful Food Markets to every elementary school in Wards 7 and 8, and much more. Today, I'd like to take a look back at our 38-year history and set the stage for our future.

In this Annual Report, you'll learn more about the place-based approach that will guide our work. You'll also hear from some of our new neighbors and community partners and learn why the holistic approach to our work is more important than ever.

Your generous support is vital. As you read through, you'll see, in-depth, the impact you've made over the past year.

With construction of The Commons complete, I am excited to open our doors to all of you and to our children and families. It is the shared intention of all of us at Martha's Table to fill the building with learning, love, and joy.

Yours in service,



Patty Stonesifer
President and CEO

Turning the Page

1982
Open for Business
With \$93 in hand, Martha's Table opens its doors to the community.



YES, WE'RE OPEN



Long concerned about the poverty afflicting much of the nation's capital, Dr. Veronica Maz and Father Horace McKenna file the paperwork to establish Martha's Table.



1983
McKenna's Wagon Rolls Out

McKenna's Wagon, our daily mobile food delivery service, goes out for the first time, in a repurposed Good Humor truck.

1980
Setting the Table

Long concerned about the poverty afflicting much of the nation's capital, Dr. Veronica Maz and Father Horace McKenna file the paperwork to establish Martha's Table.

Firmly anchored in the community, Martha's Table needs more space to house its growing programs. With the timely retirement of an auto body shop two doors down, Martha's Table expands into a two story building, doubling operating space.

1991
We Need More Space!

Firmly anchored in the community, Martha's Table needs more space to house its growing programs. With the timely retirement of an auto body shop two doors down, Martha's Table expands into a two story building, doubling operating space.

2000
More Martha's Table

The start of a new century ushers in further expansion of both services and space. A successful capital campaign finances the start of a renovation and construction of a newly acquired space on 14th Street, ensuring deepened services for children and teens.

1987
Children's Center Opens

Children's center programs are expanded to support young people between the ages of three and eighteen, with a new daily program focused on learning activities for preschool students and their caregivers.

2004
Hello, Martha's Outfitters

Martha's Outfitters, an affordable thrift store where families and neighbors in need can shop at no cost, opens on 14th Street.

2010
Recognized and Accredited

Martha's Table's Child Development Center receives accreditation from the National Association for the Education of Young Children, one of only two early childhood education programs in the District to receive this distinction.

2011
Healthy Markets Launched

In addition to our ongoing on-site meal distribution and McKenna's Wagon, Martha's Table launches healthy, no-cost, pop-up grocery markets throughout the city to tackle hunger and spread the joy of healthy eating.

2008
Recession Hits Hard

The 2008 recession doubles the number of clients seeking emergency support services from Martha's Table. With the help of committed volunteers and donors, Martha's Table distributes even higher numbers of meals and clothing to meet the needs of the community.

2015
Expansion on the Horizon

Martha's Table announces that it will open a brand new, purpose-built space in Ward 8 in 2018 to extend its full range of child, youth, and family programs east of the Anacostia River.

2016
Martha's Outfitters Relaunches

As part of Martha's Table's expansion to Ward 8, Martha's Outfitters on 14th Street closes. Martha's Outfitters relaunches in the Anacostia Historic District under a new model designed for families with young children.

2018
Moving our Headquarters to Ward 8

In June 2018, Martha's Table opens its new headquarters located in DC's Ward 8. The move will allow program expansion by over 40% as we continue to focus on providing access to education, healthy food, and family supports to neighbors in Southeast DC.

2018
Opening our Satellite Location in Ward 1

In Fall 2018, Martha's Table will open a satellite location just up the street from its historic 14th Street location in the Maycroft building. The recently renovated building on 15th Street and Columbia Road will house 4 early childhood classrooms and community support services.

Our name comes from an admirable individual in the Bible, who was consumed by preparations in the kitchen during a visit from Jesus and his disciples: Martha! While we are not a religiously based organization, our founders selected the name "Martha's Table" to represent the dignity in being the one who serves.

But who is Martha?

Our name comes from an admirable individual in the Bible, who was consumed by preparations in the kitchen during a visit from Jesus and his disciples: Martha! While we are not a religiously based organization, our founders selected the name "Martha's Table" to represent the dignity in being the one who serves.

But who is Martha?

Our name comes from an admirable individual in the Bible, who was consumed by preparations in the kitchen during a visit from Jesus and his disciples: Martha! While we are not a religiously based organization, our founders selected the name "Martha's Table" to represent the dignity in being the one who serves.

But who is Martha?

Our name comes from an admirable individual in the Bible, who was consumed by preparations in the kitchen during a visit from Jesus and his disciples: Martha! While we are not a religiously based organization, our founders selected the name "Martha's Table" to represent the dignity in being the one who serves.

But who is Martha?

Our name comes from an admirable individual in the Bible, who was consumed by preparations in the kitchen during a visit from Jesus and his disciples: Martha! While we are not a religiously based organization, our founders selected the name "Martha's Table" to represent the dignity in being the one who serves.

But who is Martha?

Our name comes from an admirable individual in the Bible, who was consumed by preparations in the kitchen during a visit from Jesus and his disciples: Martha! While we are not a religiously based organization, our founders selected the name "Martha's Table" to represent the dignity in being the one who serves.

But who is Martha?

Our name comes from an admirable individual in the Bible, who was consumed by preparations in the kitchen during a visit from Jesus and his disciples: Martha! While we are not a religiously based organization, our founders selected the name "Martha's Table" to represent the dignity in being the one who serves.

But who is Martha?

Our name comes from an admirable individual in the Bible, who was consumed by preparations in the kitchen during a visit from Jesus and his disciples: Martha! While we are not a religiously based organization, our founders selected the name "Martha's Table" to represent the dignity in being the one who serves.

But who is Martha?

Our name comes from an admirable individual in the Bible, who was consumed by preparations in the kitchen during a visit from Jesus and his disciples: Martha! While we are not a religiously based organization, our founders selected the name "Martha's Table" to represent the dignity in being the one who serves.

But who is Martha?

Our name comes from an admirable individual in the Bible, who was consumed by preparations in the kitchen during a visit from Jesus and his disciples: Martha! While we are not a religiously based organization, our founders selected the name "Martha's Table" to represent the dignity in being the one who serves.

But who is Martha?

Our name comes from an admirable individual in the Bible, who was consumed by preparations in the kitchen during a visit from Jesus and his disciples: Martha! While we are not a religiously based organization, our founders selected the name "Martha's Table" to represent the dignity in being the one who serves.

But who is Martha?

Our name comes from an admirable individual in the Bible, who was consumed by preparations in the kitchen during a visit from Jesus and his disciples: Martha! While we are not a religiously based organization, our founders selected the name "Martha's Table" to represent the dignity in being the one who serves.

But who is Martha?

Our name comes from an admirable individual in the Bible, who was consumed by preparations in the kitchen during a visit from Jesus and his disciples: Martha! While we are not a religiously based organization, our founders selected the name "Martha's Table" to represent the dignity in being the one who serves.

But who is Martha?

Our name comes from an admirable individual in the Bible, who was consumed by preparations in the kitchen during a visit from Jesus and his disciples: Martha! While we are not a religiously based organization, our founders selected the name "Martha's Table" to represent the dignity in being the one who serves.

But who is Martha?

Our name comes from an admirable individual in the Bible, who was consumed by preparations in the kitchen during a visit from Jesus and his disciples: Martha! While we are not a religiously based organization, our founders selected the name "Martha's Table" to represent the dignity in being the one who serves.

But who is Martha?

Our name comes from an admirable individual in the Bible, who was consumed by preparations in the kitchen during a visit from Jesus and his disciples: Martha! While we are not a religiously based organization, our founders selected the name "Martha's Table" to represent the dignity in being the one who serves.

But who is Martha?

Our name comes from an admirable individual in the Bible, who was consumed by preparations in the kitchen during a visit from Jesus and his disciples: Martha! While we are not a religiously based organization, our founders selected the name "Martha's Table" to represent the dignity in being the one who serves.

But who is Martha?

Our name comes from an admirable individual in the Bible, who was consumed by preparations in the kitchen during a visit from Jesus and his disciples: Martha! While we are not a religiously based organization, our founders selected the name "Martha's Table" to represent the dignity in being the one who serves.

But who is Martha?

Our name comes from an admirable individual in the Bible, who was consumed by preparations in the kitchen during a visit from Jesus and his disciples: Martha! While we are not a religiously based organization, our founders selected the name "Martha's Table" to represent the dignity in being the one who serves.

But who is Martha?

Our name comes from an admirable individual in the Bible, who was consumed by preparations in the kitchen during a visit from Jesus and his disciples: Martha! While we are not a religiously based organization, our founders selected the name "Martha's Table" to represent the dignity in being the one who serves.

But who is Martha?

Our name comes from an admirable individual in the Bible, who was consumed by preparations in the kitchen during a visit from Jesus and his disciples: Martha! While we are not a religiously based organization, our founders selected the name "Martha's Table" to represent the dignity in being the one who serves.

But who is Martha?

Our name comes from an admirable individual in the Bible, who was consumed by preparations in the kitchen during a visit from Jesus and his disciples: Martha! While we are not a religiously based organization, our founders selected the name "Martha's Table" to represent the dignity in being the one who serves.

But who is Martha?

Our name comes from an admirable individual in the Bible, who was consumed by preparations in the kitchen during a visit from Jesus and his disciples: Martha! While we are not a religiously based organization, our founders selected the name "Martha's Table" to represent the dignity in being the one who serves.

But who is Martha?

Our name comes from an admirable individual in the Bible, who was consumed by preparations in the kitchen during a visit from Jesus and his disciples: Martha! While we are not a religiously based organization, our founders selected the name "Martha's Table" to represent the dignity in being the one who serves.

But who is Martha?

Our name comes from an admirable individual in the Bible, who was consumed by preparations in the kitchen during a visit from Jesus and his disciples: Martha! While we are not a religiously based organization, our founders selected the name "Martha's Table" to represent the dignity in being the one who serves.

But who is Martha?

Our name comes from an admirable individual in the Bible, who was consumed by preparations in the kitchen during a visit from Jesus and his disciples: Martha! While we are not a religiously based organization, our founders selected the name "Martha's Table" to represent the dignity in being the one who serves.

But who is Martha?

Our name comes from an admirable individual in the Bible, who was consumed by preparations in the kitchen during a visit from Jesus and his disciples: Martha! While we are not a religiously based organization, our founders selected the name "Martha's Table" to represent the dignity in being the one who serves.

But who is Martha?

Our name comes from an admirable individual in the Bible, who was consumed by preparations in the kitchen during a visit from Jesus and his disciples: Martha! While we are not a religiously based organization, our founders selected the name "Martha's Table" to represent the dignity in being the one who serves.

But who is Martha?

Our name comes from an admirable individual in the Bible, who was consumed by preparations in the kitchen during a visit from Jesus and his disciples: Martha! While we are not a religiously based organization, our founders selected the name "Martha's Table" to represent the dignity in being the one who serves.

But who is Martha?

Our name comes from an admirable individual in the Bible, who was consumed by preparations in the kitchen during a visit from Jesus and his disciples: Martha! While we are not a religiously based organization, our founders selected the name "Martha's Table" to represent the dignity in being the one who serves.

But who is Martha?

Our name comes from an admirable individual in the Bible, who was consumed by preparations in the kitchen during a visit from Jesus and his disciples: Martha! While we are not a religiously based organization, our founders selected the name "Martha's Table" to represent the dignity in being the one who serves.

But who is Martha?

Our name comes from an admirable individual in the Bible, who was consumed by preparations in the kitchen during a visit from Jesus and his disciples: Martha! While we are not a religiously based organization, our founders selected the name "Martha's Table" to represent the dignity in being the one who serves.

But who is Martha?

Our name comes from an admirable individual in the Bible, who was consumed by preparations in the kitchen during a visit from Jesus and his disciples: Martha! While we are not a religiously based organization, our founders selected the name "Martha's Table" to represent the dignity in being the one who serves.

But who is Martha?

Our name comes from an admirable individual in the Bible, who was consumed by preparations in the kitchen during a visit from Jesus and his disciples: Martha! While we are not a religiously based organization, our founders selected the name "Martha's Table" to represent the dignity in being the one who serves.

But who is Martha?

Our name comes from an admirable individual in the Bible, who was consumed by preparations in the kitchen during a visit from Jesus and his disciples: Martha! While we are not a religiously based organization, our founders selected the name "Martha's Table" to represent the dignity in being the one who serves.

But who is Martha?

Our name comes from an admirable individual in the Bible, who was consumed by preparations in the kitchen during a visit from Jesus and his disciples: Martha! While we are not a religiously based organization, our founders selected the name "Martha's Table" to represent the dignity in being the one who serves.

But who is Martha?

Celebrating 35 Years of McKenna's Wagon: 11 Million Meals Later

For 35 years, McKenna's Wagon has been a vital source of support for neighbors across the District of Columbia. Since 1983, no matter the weather, the Wagon has rolled out every single night of the year—delivering over 11 million hot meals to thousands who lack access.

*"It's just not a question for me—if someone's hungry, I want to make sure they're fed."
-Gary, McKenna's Wagon Driver for over 15 years*

Moving our Headquarters to Ward 8

Martha's Table has always gone where the need is greatest. This summer we are excited to move our headquarters to further our mission.

Our new home, located in the Fort Stanton/Hillsdale neighborhood of Southeast D.C., will feature a brand new, state-of-the-art kitchen; welcoming and multi-functional learning and gathering spaces for the community; and breathtaking views of the city.

We are thrilled and hope you will join us on **June 23rd for our Grand Opening Celebration!**

For additional information on our summer programming visit: marthastable.org/summer2018

Our sincerest gratitude to our capital campaign donors who made our new headquarters possible:

- A. James & Alice B. Clark Foundation
- Bainum Family Foundation
- Bloomberg Philanthropies
- Chris Niemczewski and Elise Hoffmann
- CityBridge Foundation
- David M. Rubenstein
- Diane and Norman Bernstein Foundation
- Eugene and Agnes E. Meyer Foundation
- Harry & Jeanette Weinberg Foundation
- The J. Willard and Alice S. Marriott Foundation
- Joe and Lynne Horning
- The Morris and Gwendolyn Cafritz Foundation
- The Richard E. and Nancy P. Marriott Foundation
- Robert and Arlene Kogod Family Foundation
- Victoria and Roger Sant
- World Bank Community Connections Fund
- And other generous supporters

June 2017



October 2017



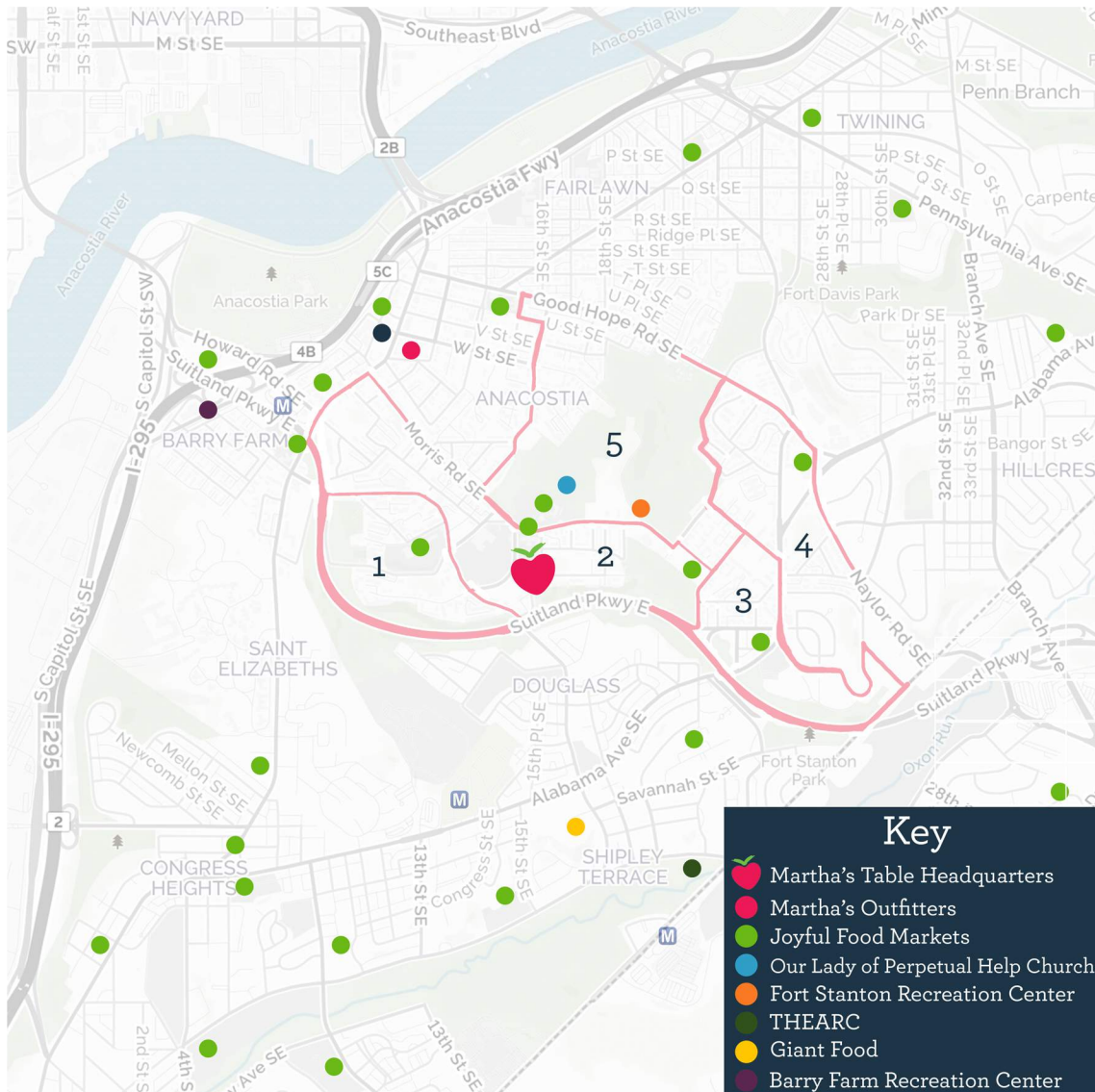
April 2018



Our Place-Based Approach

None of the challenges that our programs aim to address—food insecurity, a need for quality childcare, a need to connect youth with opportunities for growth—can be considered by themselves. These issues are connected, and families often deal with them simultaneously.

That's why our move to The Commons is guided by a place-based approach. A place-based approach focuses on empowering local communities by giving residents greater opportunities for input on issues that are important to them. Through collaborative efforts with our new neighbors, we will work from an informed perspective to transform local challenges into opportunities for impact.



50%

of all children in Ward 8 are growing up in poverty

1

grocery store for 80,000 residents in Ward 8 opposed to 6 per ward in Wards 1-5

30%

of Ward 8 residents are children under the age of 18

Source: D.C. Action for Children

Our Programs

Funding from donors like you allowed us to significantly expand and improve our programming in 2017!

In order to support every child in achieving their greatest opportunity, we offer a variety of programming that works to address the adverse effects of living on a low income. In 2017, we distributed over **1.95 million healthy meals**, more than any previous year. We celebrated and encouraged healthy eating by bringing monthly **Joyful Food Markets to 39 schools** in Wards 7 and 8. We deepened the impact of our year-round education programs, which supported more than **150 students**, by focusing on **literacy** and engaging the caregivers who love and guide our students.

Through our Summer Youth Employment Program and pilot in-school and after-school programs at John Hayden Johnson Middle School, where 100% of students are facing economic barriers, we connected older youth with opportunities and support.

An incredible **18,000 volunteers** and dedicated **community partners** assisted in making these programs possible. As we shift our headquarters to the Fort Stanton/Hillsdale neighborhood of Ward 8, a neighborhood with a rich history and unique opportunities for impact, we continue to expand and redesign our programs to achieve the greatest impact. **We cannot continue to bring our programming to thousands of D.C. neighbors without your support.**

2017 by the Numbers:



75%

of Our Families Made Healthy Changes to Their Diets



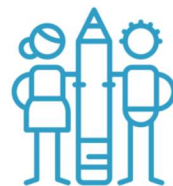
14,000

Individuals Accessed Free Clothing and Household Necessities



1.95 Million

Healthy Meals Distributed



150+

Students Enrolled in High-Quality Educational Programs



74,000

Bags of groceries brought home by families through healthy grocery markets



88%

of Our Elementary Students Increased Their Reading Levels



Our Food Access Programs

Throughout Washington, D.C., access to healthy food is far from equal, with nearly 70% of the city's grocery stores located in areas with the highest household incomes west of the Anacostia River. In Ward 8, there is only one grocery store for 80,000 people.

Joyful Food Markets are expanding access to healthy food for thousands of children and their families each month and increasing equity in the food system by expanding to every single elementary school east of the Anacostia River this year.

Distributing groceries and co-leading healthy eating activities at our Joyful Food Markets is shared by a wide variety of groups, ranging from religious groups to law firms. Our Adopt-a-Market partners make a tangible impact while positively shaping relationships with children and families across Southeast D.C. **We are excited to expand our Adopt-a-Market program by the close of 2018 to assist in tackling food insecurity within all elementary schools in Wards 7 and 8.**

Our Adopt-a-Market Partners:

World Bank
Sibley Memorial Hospital
Serve DC
Potomac Job Corps
Optoro
The New Macedonia Baptist Church
Eastern Senior High School
Edmund Burke School
Bernstein Management Company
Dematha Catholic High School

Howard University
The National Council of Negro Women Inc.
Maret School
Georgetown Sigma Alpha Epsilon
Serve Your City
The Advisory Board Company
The Community Justice Project
at Georgetown Law
Trustify



Join us to improve food access by becoming an Adopt-a-Market partner. For more information on volunteering visit: marthastable.org/volunteer.



School Year 2016-2017 Joyful Food Market Parent and Volunteer, Shani:

"I'm a proud Joyful Food Market shopper and volunteer.

Each month, I spend an afternoon at my child's school helping my neighbors shop for healthy food and working with the Chef Educators to get children and their parents excited about eating healthy.

These markets are so important to my family. As a mother of five children, it can be a balancing act to make ends meet. A few extra bags of groceries courtesy of these markets can be a huge help.

Plus, I get so much joy out of cooking with my kids, preparing dishes with ingredients we picked up at the markets.

Joyful Food Markets made our family stronger."

Our Volunteers

Each day, dedicated community members from all over the region come together to further the mission of Martha's Table. Our work simply would not be possible without their commitment. Nearly 18,000 students, retirees, engineers, and everyone in between spent 55,000 hours preparing healthy meals, distributing fresh produce, and assisting teachers and students in our education programs in 2017.

Thank you for standing with us!

We need you more now than ever, as we expand our footprint to two locations and increase programming by 40%. Join us as we grow our community of volunteers by emailing: volunteers@marthastable.org.

Volunteer Impact



\$57,494.68

donated to programming
by volunteers



\$1.29 Million

administrative cost savings
from volunteer hours



55,000

service hours donated
by volunteers



School Year 2016-2017 Joyful Food Market Adopt-a-Market Partner, New Macedonia Church:

"We volunteer at Anne Beers Elementary, which is just down the street from our church. We love that it is a healthy food market for kids who might not have the opportunity to get healthy food otherwise.

Our members are passionate about providing the opportunity for healthy eating in a harm-free environment. We've adopted the Joyful Food Market for two consecutive years now, helping over 2,500 individuals and distributing over 40,000 pounds of food.

The impact has been incredible."

-Pastor Angelo Berry, New Macedonia Baptist Church

Our Education Programs

By the end of 2018, Martha's Table will have opened two new, beautiful early childhood education centers: The Maycroft in Ward 1 and The Commons in Ward 8. The new classrooms in these centers have been built specifically for our students, with a focus on encouraging literacy and social-emotional development. We are thrilled to expand to these two locations!

We *remain* committed to supporting our Ward 1 community. Through a partnership with Jubilee Housing, we will take up residence in a newly remodeled space at The Maycroft, enabling us to keep early childhood education, McKenna's Wagon, a Lobby Market, our nightly meal program, and volunteer opportunities in the neighborhood.

Education Program Outcomes: 2016 - 2017 School Year

87%

of early-childhood students exceeded literacy GOLD® Checkpoint scores

88%

of our elementary-age students progressed in guided reading, with majority reading at or above grade level

24

parents with children in our early-childhood program completed the "Parenting Journey" course

Our Continued Impact in Ward 1

Justice and equity are at the forefront of community supports, which is why we have joined forces with Jubilee Housing to continue standing alongside our neighbors in Ward 1. Local families feel the burden of high housing costs. The latest data shows, 40.5% of families in Ward 1 spend more than a third of their income on rent. The historic Maycroft building will offer a combination of affordable housing and early childhood education programming in the vibrant Columbia Heights neighborhood. This partnership allows us to continue supporting the community we have called home for over 38 years.

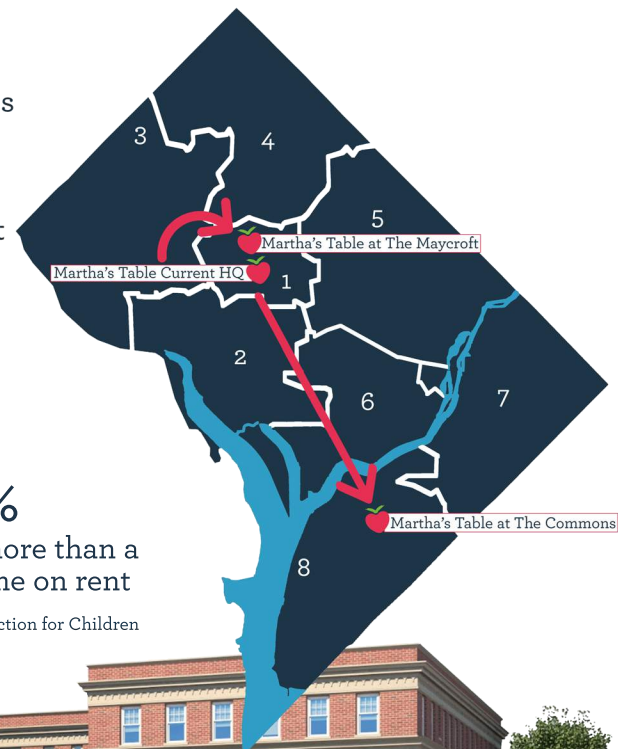
Our Community:

children under the age 18 of are **12.6%** of the population

1 in 4 children are growing up in poverty

40.5% of families spend more than a third of their income on rent

Source: D.C. Action for Children



Our Leadership

Every child deserves the opportunity for their brightest future and a deeply engaged family and community committed to their success. That's why we are passionate believers in equity and opportunity at Martha's Table. During this exciting time in our history, we thank our staff, leadership, and board members for their continued hard work, professionalism, and the joy they bring to our community.

Our Board:

Cathy Sulzberger, Chair
 Ellis B. Carr, 2nd Vice Chair and Chair-Elect
 Domingo Rodriguez, Vice Chair
 Michael Bartscherer, Secretary
 Ken Bacon
 Dr. Johnnetta Cole
 Camille Giraud Akeju
 Laura Graham O'Shaughnessy
 David Gregory
 Linda Moore
 Joan Nathan
 Chris Niemczewski
 David Roodberg
 Patty Stonesifer
 Carrie VanRoekel
 Elsa Walsh
 Marceé J. White, MD

Our Management Team:

Patty Stonesifer, *President & CEO*
 Rae Davidson, *Director of Development*
 Akidah Felder, *Director of Strategic Communications*
 Caron Gremont, *Senior Director, Healthy Eating Programs*
 Felicia Jones, *Director of Healthy Start at The Commons*
 Timothy Jones, *Director of Healthy Connections*
 Amy Kurz, *Chief Administrative Officer*
 Mireille Lopez Humes, *Senior Director, Education Programs*
 Lindsay Morton, *Director of Healthy Market Programs*
 Bhumip Patel, *Chief Financial Officer*
 Darren Phelps, *Director of Human Resources*
 Yasmin Shaffi, *Director of Healthy Start at The Maycroft*
 Jason Wallace, *Director of Community Supports and Volunteers*
 Tiffany Williams, *Chief Program Officer*

Our Director of Strategic Communications, Akidah Felder, recently sat down with longtime Board Chair Cathy Sulzberger and incoming Board Chair Ellis Carr to discuss their leadership and vision for Martha's Table. Here are excerpts of their conversation:

Cathy, on "handing over the baton" to Ellis:

Cathy: Martha's Table has been a very important part of my life. I've been on the board for a long time and I knew that when we moved, it had to be transformational. Ellis is such a great asset as Board Chair because he is thoughtful, smart, and doesn't rush into decisions. The synergies between his real work, his everyday work, and his work in Anacostia are so helpful to us—specifically in terms of informing how we deal with city government, the financial community, and how we become good neighbors.

Ellis, on what his new role means to him:

Ellis: I grew up born and raised in the "DMV" and being able to go deep here in a very genuine way means a lot to me. Both of my parents were retired DC Public School teachers, and therefore equipping educators, high-quality education and community is a big part of who I am. I definitely think that we are at a critical time in our history and are approaching a turning point for us in a lot of ways. No, not just because we're moving geographically, but also because we recognize the voice and the power that we have in this community. I think, as a result of that, we have a responsibility to do more.



Thank You, Cathy!

We commend Cathy Sulzberger for her steadfast commitment to standing with children in D.C. Her passionate 18 years of service on Martha's Table's Board of Directors, including her many years as Board Chair, has aided us as we evolve into an increasingly dynamic organization. Cathy, thank you for continuing to S-T-R-E-T-C-H with us as we grow!

2017 Apple Society

"Apple Society members are leaders and investors. Through annual gifts of \$10,000 and more, these core donors advance our mission to support children and families throughout the District. On behalf of Martha's Table and our Board of Directors, we thank them for their generosity."

-Chris Niemczewski, Development Committee Chairman and Apple Society Member

Gold Apples

Anonymous (2)
A. James & Alice B. Clark Foundation
The Honorable Ann W. Brown
Bill & Melinda Gates Foundation
Cathy Sulzberger and Dr. Joe Perpich
Charina Endowment Fund
David M. Gregory and Beth A. Wilkinson
Laura Graham O'Shaughnessy
and Tim O'Shaughnessy
Mary W. Graham
The Rockefeller Foundation
Sheila and Mike Ryan
Steven and Carrie VanRoekel
Ted and Lynn Leonsis
United Way of the National Capital Area

Green Apples

Anonymous (2)
The Andrew and Julie Klingenstein Fund
Bainum Family Foundation
Barbara Washburn and Bill Murphey
Carol Brown Goldberg and Hank
Goldberg
Dweck Family Foundation
Elsa Walsh and Robert Woodward
George Kaiser Family Foundation
Harold and Nancy Zirkin
Jane Bancroft Robinson Foundation
Kathryn and Michael Hanley
The Morris and Gwendolyn Cafritz
Foundation
The Richard E. and Nancy P. Marriott
Foundation
Robyn Lipton and Bruce Kuhlik
Terry Beaty and Anne Mehringer
William S. Abell Foundation Inc.
William Trout Charitable Trust

Yellow Apples

Anonymous (3)
The Bernard and Anne Spitzer
Charitable Trust
Blum-Kovler Foundation - Judy and
Peter Kovler

Yellow Apples Cont.

Carter and Melissa Cafritz
Charitable Trust
Chris Niemczewski and Elise Hoffmann
The Cora and John H. Davis Foundation
Diane and Norman Bernstein Foundation
Eugene & Agnes E. Meyer Foundation
Julie Banzhaf-Stone and Steven Stone
Mary and Jeff Zients
National Presbyterian Church
The Smart Family Fund
William J. and Dorothy K. O'Neill
Foundation

Red Apples

Anonymous (2)
Akintoye and Nzenalu Shoetan
Alan and Amy Meltzer
Alder Fund
Anastasia P. Vournas and
J. William Uhrig
Anthony and Dale Pappas
Bernstein Family Foundation
The Betty and Wes Foster
Family Foundation
The Birk Family Foundation
Bob and Patricia Schieffer
Burks B. Lapham
Catie and Donald Marron
Celia and Stephen Roady
CharityWorks
Charlotte R. Johnson
Diana Farrell and Scott Pearson
Donald Graham and Amanda Bennett
Edward H. Kaplan
Edward MacAllister
Elissa Leonard and Jay Powell
Elizabeth K. Graham
Estate of Walter Francis Smith
George Wasserman Family Foundation
The Gratis Foundation
The Gregory and Claire Wilcox Family
Foundation
Harman Family Foundation
Henry and Joyce Harris
Jack Reidhill in honor of
Tracy A. Taylor

Red Apples Cont.

Joan Fabry and Michael Klein
John Dickson Home
John Edward Fowler Memorial
Foundation
Joshua Izenberg and Erika Stillabower
Kenneth and Judy Bacon
Laurie Wingate and Mark Chandler
Lee Lilley and Lyric Thompson
Local Initiatives Support Corporation
The Lois and Richard England
Family Foundation
Mark Colley and Deborah Harsch
Mary Challinor and Henry Richardson
Melanie and Larry Nussdorf
Michael E. Nelson
Milton and Dorothy Sarnoff Raymond
Foundation
Molly Graham
Newman's Own Foundation
Peter Bladin and Donna Lou
Phillip and Valerie Brown
Prince Charitable Trusts
Robert and Arlene Kogod
Roger and Vicki Sant
Share Fund
Steven and Chani Laufer
Suzanne Van Hook Tremblay and
George C. Tremblay
Susan H. Harrison
Suzan and Kurt DelBene
Tom Florence
William R. Hendley

Apple Society

Become an Apple Society member and you will receive the latest news, personalized updates, invitations to program-related events and exclusive volunteer opportunities that offer deeper engagement with our programs-or just a moment to roll up your sleeves. For more information on joining the Apple Society, please contact Alena Kaufman at akaufman@marthastable.org.

Donor Stories



Horning Family Fund's Joe and Lynne Horning

Throughout their lives, Joe and Lynne Horning have been dedicated to creating great places for families and children to thrive. With a focus on Ward 8 communities in particular, Joe, Lynne, and the Horning Family Fund have worked tirelessly to make sure every child in our city has the shot at success that they deserve. For years, they have supported not just Martha's Table, but other great organizations like Horton's Kids, THEARC, and so many more.

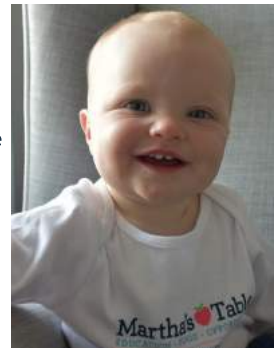
We wouldn't be here without the vision and support of Joe and Lynne. They have laid the foundation for the future of our organization through their invaluable gift of acreage for The Commons and their leadership gift for our capital campaign.

We are so grateful to count the Hornings as partners in our work. At The Commons, in Ward 8, and throughout the District of Columbia, their immeasurable contributions to the children and families in our city will stand the test of time.

Kimberly, Marc, and Juliana Goldwein

Marc and Kimberly have supported Martha's Table through unique methods. In 2013, the couple began incorporating sandwich making for McKenna's Wagon into part of their weekend routine. In 2015, the couple encouraged donations to Martha's Table in lieu of wedding gifts and even set up a station for guests to make sandwiches. And to celebrate the birth of their daughter Juliana in 2017, the couple again asked friends and family for Martha's Table donations – offering to match every dollar donated; they raised enough money to support a child in our education program for a full school year.

The couple plans to continue to support Martha's Table both financially and through volunteerism. In Kimberly's words, "Our relationship with Martha's Table has just begun. We plan to keep growing with the organization in meaningful and impactful ways."



Julie Banzhaf-Stone and Steven Stone

"Martha's Table is at a critical juncture as it expands its presence into two new locations and collaborates with other organizations to meet critical community needs. I have long been interested in nonprofits as they move from one phase of organizational life to another. This is an extraordinary moment! As a Leadership Council member, I hope to help Martha's Table leverage all available resources – volunteers, community-based organizations, corporations, and government – to ensure its sustainable future and deepen the impact of its work." - Julie Banzhaf-Stone

Since our founding, the Stone family has stood with local children and families by being committed volunteers. Julie has volunteered in the kitchen, at Joyful Food Markets, and through advisory work with our development staff. We are pleased to welcome her in an advisory role to our Leadership Council.

In the late 1980's, Julie worked as a program director for a local organization that granted Martha's Table funds in support of our early childhood programs. As time went on, Julie and her husband Steve both started volunteering with their colleagues. Steve engaged colleagues at his law firm in creating firm-wide auctions to benefit our programs, volunteering in our kitchen, and attending Sips & Suppers.

The Stone family, including Julie and Steve's two children Emily and Sam, have been involved for many years with Martha's Table in a range of ways including volunteering, engaging family and friends, and advising our staff. Sam and Emily both volunteered in our kitchen to complete all of their high school community hours. Alongside our other volunteers, their combined efforts have provided thousands of meals to neighbors across D.C.

In 2017, we launched our first ever Leadership Council, comprised of corporate leaders in D.C. Julie, as a former grant-maker and current nonprofit advisor and fundraiser, will provide excellent philanthropic guidance.

Thank You

We thank the following individuals, foundations, and organizations who donated \$2,500 or more in 2017:

Anonymous (6)
The Abe and Kathryn Selsky Foundation
Alex Orfinger and Cal Bowie
Alison and John Steadman
Amanda and Andrew Coelho
Amanda Leiter and Sambhav Sankar
Amy and Michael Bartscherer
Andrea Grant and Sandy Merber
Andrea Mitchell and Alan Greenspan
Andrew and Jennifer Tulumello
Anne Carlson and Donald Goldberg
Arne and Ruth Sorenson
Barbara and Arthur Bushkin
Benjamin and Sue Boley
Beverly M. Nickens
Bradt Family Fund
Brooke Bainum
Bruce McNamer
Bruce Wilson and Lisa Westfall
Carol Robinson
Carrie A. Ross
Carter C. Perry
Catawamteak Fund of Maine
Catherine Brown and Robert Gordon
Catherine Green
Charles and Francene Rodgers
Christina Shutes and Gino Heilizer
Christine Spolar
Christopher M. McMackin and David C. Stavos
Cynthia G. Parshall
Dana Robinson
David Boris
David Doniger and Lisa Jorgenson
Deckaid DC
Dennis Zirkle
Domingo and Jeanne Rodriguez
Edward Angel and Susan LaMountain
Elaine Church
Elizabeth Alexander
Elizabeth Hylton
Elizabeth Lichner
Erna and Michael Kerst
Erwin Gudelsky
Ethel J. Coleman
Ferris Family Foundation
Foose Family Charitable Foundation
Frederick and Jill Klein
George W. Coffroad
Giselle Hicks
Gordon B. and Molly Heylin
Gregory Ossi and Lien Thao Duong
Heather C. Maloy
Helene Gayle
Irene and Alan L. Wurtzel
Isaac Wolf
Ivor and Therese Pritchard
Ambassador J. Stapleton and Elissandra Roy
The Jacquemin Family Foundation
James and Linda Beers
Jamie Gorelick and Richard Waldhorn
Janel and Brett Broderick
Jeanine Elgin

Jeff Mason
Jeremiah Charitable Trust
Jessica Lerner and Daniel Pink
Jill and William Greaney
Jill Foster and Brian Roach
The John D. and Catherine T. MacArthur Foundation
John Gomperts and Katherine Klein
Jon Banks
Jonathan Puth and Mira Courpas
Jonathan W. and Maureen O'Connor Witter
Joshua Adrian
Joshua Steiner and Antoinette Del Ruelle
Karen Hibbitt
Karen Warnaka
Kasey Reisman and Andrew Gibson
Katharine Mottley
Kathleen and Chris Matthews
Kimberly and Erika Pearson Foundation
The Kiplinger Washington Editors
Landon H. Butler and Noa Gimelli
Lisa Brown
Lise Clavel
Mansoor Rashid and Sanjiv Kumar
Marc and Kimberly Goldwein
Maria DiFuccia and Charles Snyder
Mario and Deborah Boiardi
Mark H. Stumpf and Betsy Bruce
Mark Reed
Mars Foundation
Martha and John Wolf
Mary and Sean Echevarria
Mary Ann Stein
Max and Victoria Dreyfus Foundation
Michael and Deborah Ratner Salzberg Family Foundation
Michael Korn
Michael Weinreb
Mitchell-Richards Family Fund
The Morningstar Foundation
Nancy and Bill Weare
Nguyen Doan
Nkechi Okwodu
The Nora Roberts Foundation
Peggy and Mark White
Peterson Family Foundation
Philip L. Graham Fund
Richard Bernstein and Michael Minnemann
Rochelle and Charles Curtis
Rudolph Leibel
Russ and Nina Schriefer
S.E. Cronquist
Sarah Hicks Buss
Sarah Thau
Spencer Hughes
Steele Family Foundation
Stephen P. Munro
The Summit Foundation
Tegna Foundation
Van Metre Companies Foundation
Van Wie Family Foundation
Vartan and Clare Gregorian
Virginia Grace and Eli Cohen
William Alexander
William Jones

Thank you to the following people and institutions for in-kind contributions valued at \$5,000 or more in 2017:

Arnold & Porter Kaye Scholer LLP
Book Binders
Capital Area Food Bank
DLA Piper
Goulston & Storrs
Marx & Lieberman LLP
Our Lady of Perpetual Help Church
Rocklands BBQ
Susan Gage Catering
Symbio Studios

Thank you to our corporate partners whose support deepens our impact:

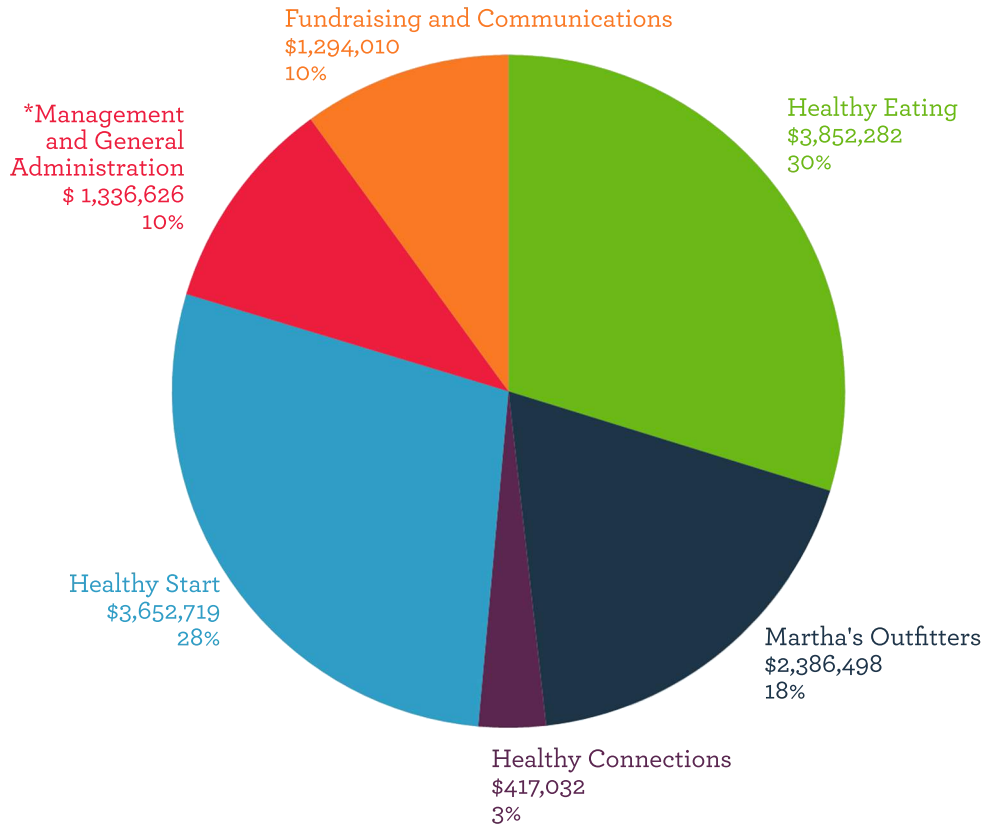
Arnold & Porter Kaye Scholer LLP
Bank of America
Bernstein Management Corporation
Bloomberg Philanthropies
DiversityInc in honor of Dr. Johnnetta B. Cole
Employees of Fannie Mae
Graham Holdings Company
Grosvenor Americas
JPMorgan Chase & Co.
Marriott International
Members of American Bar Association, Forum on Construction Law
Monumental Sports & Entertainment/So Kids Can
The Morrison & Foerster Foundation
PricewaterhouseCoopers
Sandy Spring Bank
Seyfarth Shaw LLP
Target
United Technologies
U.S. Trust
Walmart Foundation
World Bank Community Connections Fund

For more information on becoming a corporate partner, please contact Colleen Ryan at cryan@marthastable.org.

We thank the people and institutions who supported the 2018 Sips and Suppers event with a gift of \$2,500 or more:

Amalgamated Bank	Mary and Jeff Zients
Brenda Brodie	Melanie and Larry Nussdorf
Chris Niemczewski	Michael and Deborah
and Elise Hoffmann	Ratner Salzberg
Clark Construction Group, LLC	Family Foundation
Marilyn and David Brockway	Michael Smith
Forest City Washington, DC	Patrick W. Hallahan
Jake Weinstock	Sara O'Keefe
Kimberly and John Hasenberg	Steven and Carrie
JPMorgan Chase & Co	VanRoekel
Kathryn and Michael Hanley	Tamra and Ken Bentsen
Lifeway Foods, Inc.	Troutman Sanders LLP
Marcus Brauchli and	
Maggie Farley	

Fiscal Year 2017 Financial



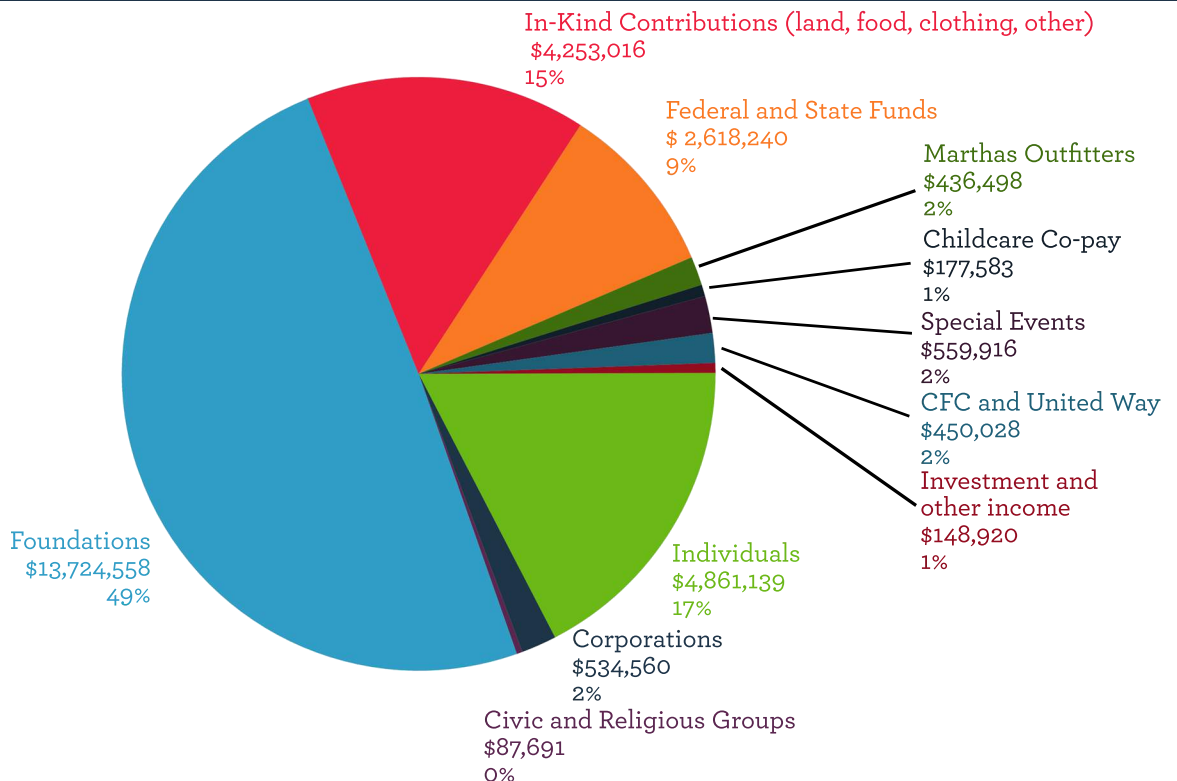
Total Expenses:
\$12,939,167

In 2017, Martha's Table increased expenses in preparation for two new centers.

Expenses depicted for Outfitters and Healthy Eating include donated food and clothing.

Total Revenue:
\$27,852,149

During 2017 Martha's Table received \$11,095,000 in capital contributions for The Commons construction.



Martha's Table

EDUCATION • FOOD • OPPORTUNITY

2017 Annual Report

Martha's Table Headquarters at The Commons
2375 Elvans Rd. SE, Washington, D.C. 20020

Please continue to send all monetary donations to
Martha's Table, PO Box 97260, Washington, D.C. 20090-7260

www.marthastable.org | 202-328-6608